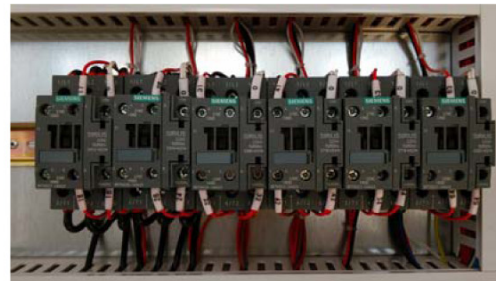


39" Wide Belt Sander

SRP-1000DA



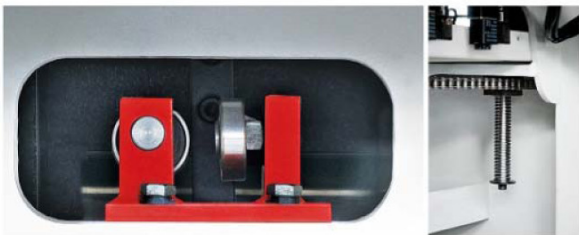
Features:



All SIEMENS Electrical parts are adopted ensures enduring and steady service life.



All casting parts are used on sanding and pressing units' structure. They will be more stable and hardly deformed ensures long time precision of the machine.



Ball screw (4pcs) and guide are adopted for up & down adjusting, transport steady and precise.



Control Panel: Numeral control panel CH-525 is used to adjust thickness figures.



Double pressing roller structure design ensures stable feeding of work piece.



Brush roller is equipped at rear side cleaning work pieces well.

<i>Specification</i>	<i>SRP-1000DA</i>
Working Width	1000mm (39")
Min Working Length	580mm
Working Thickness	3-110mm
Feeding Speed	5-30m/min
Motor for First Unit	22Kw (30HP)
Motor for Second Unit	18.5Kw (25HP)
Feeding Motor	3.0Kw (4HP)
Lifting Motor	0.55Kw (3/4 HP)
Motor for Brush Roller	0.37Kw (1/2HP)
Diameter of First Roller (Steel)	240mm
Diameter of Second Roller (Rubber)	210mm
Linear Speed of First Roller	20m/s
Linear Speed of Second Roller	18m/s
Abrasive Belt Size	1030×2200mm
Volume of Dust Collection Device	≥4500 cfm
Overall Dimensions	1740×2650×2160mm
Net Weight	3700Kgs